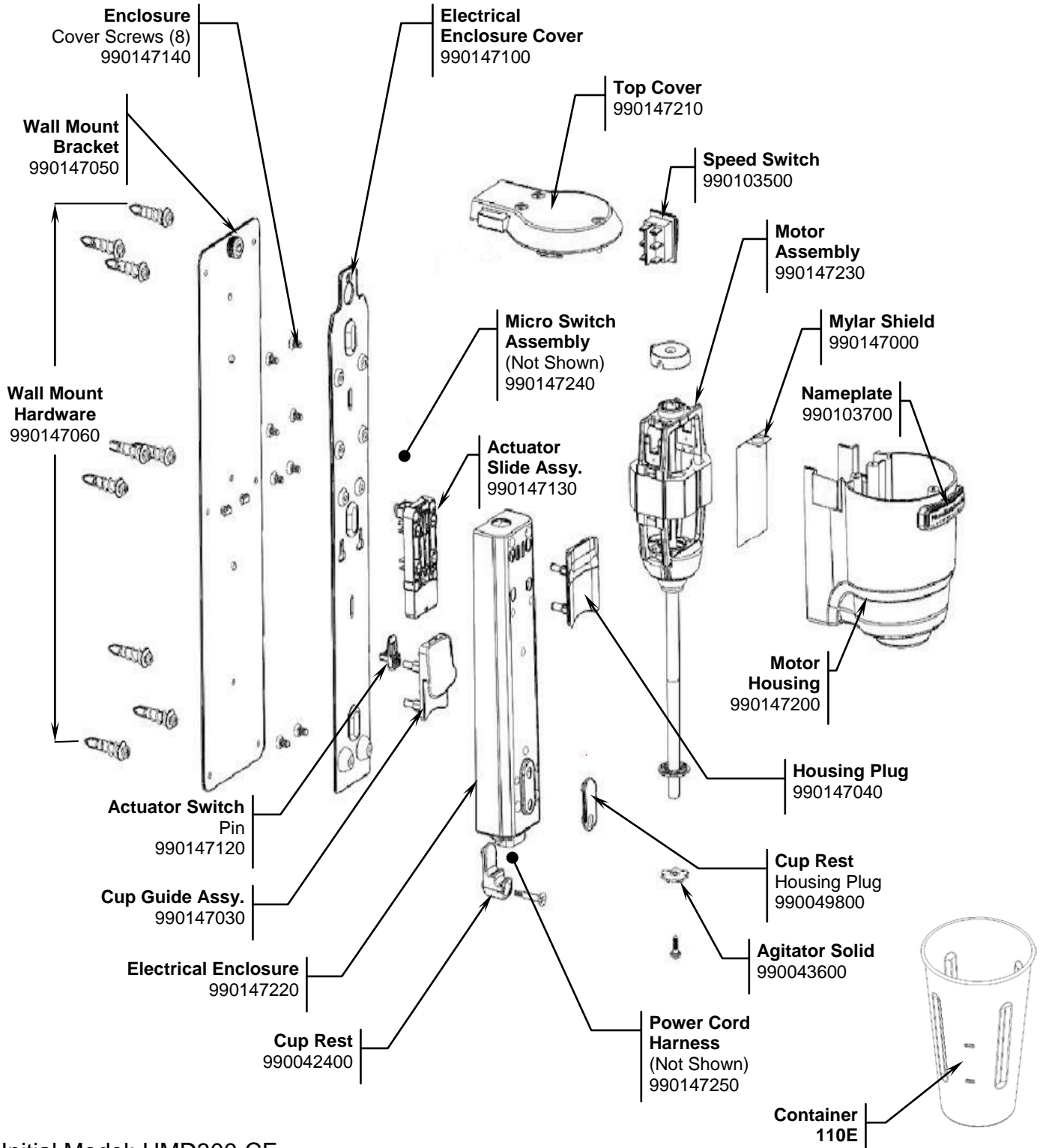



## Replacement Parts Diagram

**PROPRIETARY RIGHTS NOTICE** This document and all information contained within it is the property of Hamilton Beach Brands, Inc. (HBB). It is confidential and proprietary and has been provided to you for a limited purpose. It must be returned or destroyed upon request. Disclosure, reproduction or use of this document and any information contained within it, in full or in part, for any purpose is forbidden without the prior written consent of HBB. No photographs may be taken of any article fabricated or assembled from this document without the prior written consent of HBB.



**Initial Model:** HMD300-CE

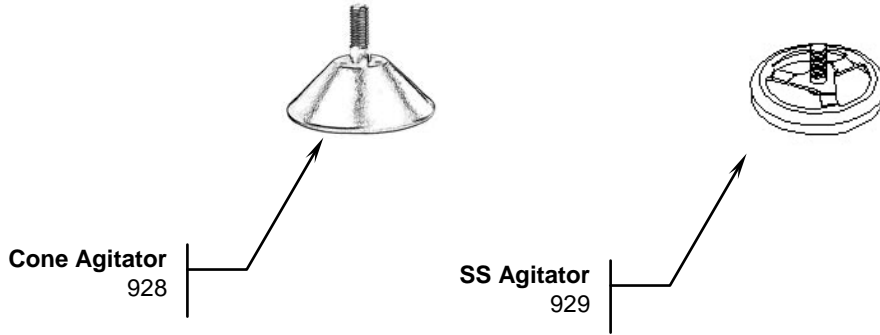
**Printed Circuit Board** 990167100 – Not Shown

 <p>Hamilton Beach 4421 Waterfront Drive Glen Allen, VA 23060</p>	Revision Description:		Update Printed Circuit Board part number.				
	Request Number:	DOC7219	Revision Date:	11/15/16	Approved by:	DOC7219	
	Issue Code(s):	L	Page:	1 of 2	Document #:	510029100	Rev:

## Replacement Parts Diagram

**PROPRIETARY RIGHTS NOTICE** This document and all information contained within it is the property of Hamilton Beach Brands, Inc. (HBB). It is confidential and proprietary and has been provided to you for a limited purpose. It must be returned or destroyed upon request. Disclosure, reproduction or use of this document and any information contained within it, in full or in part, for any purpose is forbidden without the prior written consent of HBB. No photographs may be taken of any article fabricated or assembled from this document without the prior written consent of HBB.

### Accessories



4421 Waterfront Drive Glen Allen, VA 23060	Revision Description:	Update Printed Circuit Board part number.						
	Request Number:	DOC7219	Revision Date:	11/15/16	Approved by:	DOC7219		
	Issue Code(s):	L	Page:	2 of 2	Document #:	<b>510029100</b>	Rev:	<b>C</b>